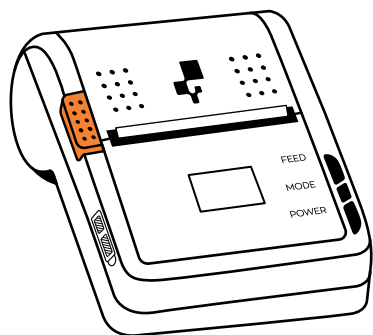




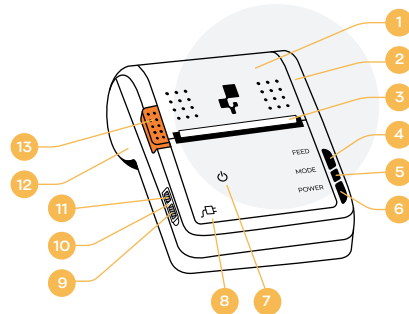
Quick Guide

inFlow Mobile Label Printer



QUICK GUIDE

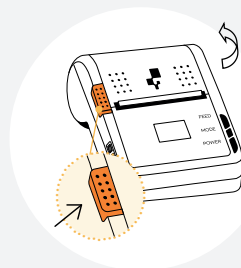
Appearance



- | | |
|-------------------------------|-----------------------------------|
| 1. Paper Cover | 9. USB Charging and Communication |
| 2. Upper Body | 10. Rubber Plug |
| 3. Dust-proof baffle | 11. Reset Switch |
| 4. Feed Button | 12. Lower Body |
| 5. Mode Button | 13. Cover Open Button |
| 6. Power Button | 14. Battery Cover |
| 7. Power/ Error Indicator | |
| 8. Battery Charging Indicator | |

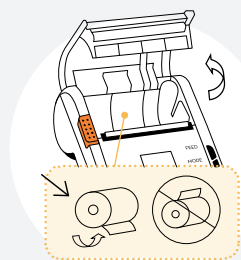
QUICK GUIDE

Install the print paper



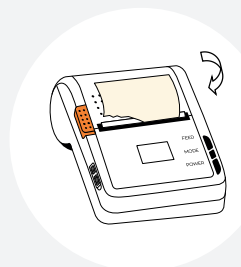
1

Press the [Cover Open Button] to open the paper compartment cover.
(as shown in Figure 1)



2

Put the print paper into the paper cabin, printing side facing down.
(as shown in Figure 2)



3

Close the cover and tear off the excess paper.
(as shown in Figure 3)

QUICK GUIDE

Performance specifications

Print ing method Line Thermal Printing	Paper thickness 60~ 85µm
Media width 20-80 mm	Print control instructions ESC/POS, CPCL, CPL, TSPL
Max printing width 72mm	Supported characters All GB18030 Chinese characters, all BIG5 Traditional Chinese characters, ASCII characters, custom character.
Resolution 11.8 dots/mm (300dpi)	
Printing speed up to 90mm/S	

Physical specifications

Dimension 116(L)X104(W)X57(H)mm	Communication interface 300dpi, Type-C USB, WIFI 5Ghz & 2.4Ghz
Weight 310g (Without paper)	Power supply mode 7.4 V/2600mAh rechargeable lithium battery
Paper roll diameter ≤ 50mm	

Environmental specifications

Operating temperature 0°C ~ 50°C	Paper Detection [ERROR indicator] will light up when there is no paper in printer. Buzzer will ring and stop printing when paper running out.
Operating humidity 10% ~ 80%	
Storage temperature -10°C ~ 60°C	
Storage humidity 10%~ 95%	

QUICK GUIDE

Basic functions introduction

Boot

Press and hold the [Power Button] more than **2 seconds**, the power indicator will light up and printer will play boot tone. Then release the [Power Button], printer will enter the Ready mode and battery indicator light shows the battery power.

Shutdown

In the sate of power-on, press and hold the [Power Button] for more than **2 seconds**, printer will play shutdown tone and power indicator will turn off. Then release the [Power Button].

Paper feed

1. Continuous paper

In the sate of power-on, press the [Feed Button], the printer will start to feed paper, and release the [Feed Button] to stop the paper feed.

2. Black mark and gap paper

In the sate of power-on, press the [Feed Button] for more than 1 second, the printer starts to feed the paper and stop at position of black mark/gap. If continuous paper installed in printer, which will automatically stop after feed 26cm, the printer will prompt an error, which can be cleared by opening and closing the paper compartment cover again.

QUICK GUIDE

Basic functions introduction

Self test

In the sate of shutdown, press and hold down [Feed Key] **first**, then press the [Power Button] until power on, printer will play boot tone. Then release the [Power Button] and [Feed Key], printer configuration will be printed.

Indicator

Battery charging indicator

- Green light: Charging completed.
- Red light: Battery charging.
- Green & red light: Charging error, please check if the battery is in good contact and check the battery temperature is normal.
- Green light flashing: Low battery

Power error indicator

- Green light: In ready mode.
- Red light on: Out of paper
- Red light flashing: Printer error. More detect check from S310s specifications.

Archon Systems Inc
260 Carlaw Ave. Unit 207, Toronto, Canada, M4M 3L1
info@archonsystems.com // 1-866-923-4974